

**CLOCK GENERATOR:  
VXI "C" SIZE MODULE - SINGLE SLOT**

**MODEL NUMBER: PMD10001.1**

**PRODUCT FEATURES**

- Single Width VXI package
- Five-(5) Clock Outputs
- 3 Synchronized and 2 Independent Clocks
- Each Clock has independent enable input
- All Clocks Triggered
- Two logic levels
- Low Power Consumption
- FCC Radiated Immunity Compliant



**OVERVIEW**

The PMD10001 is designed to act as a clock source in a VXI test system. It is housed in a single-slot "C" size VXI card and provides five clock signals as described in the below default specifications. This clock generator module can also meet custom signal requirements through alternate FPGA Bit File deployments. Each output is independently controlled by enabling and triggering logic with all outputs being disabled at power-up.

**FACTORY DEFAULT SPECIFICATIONS**

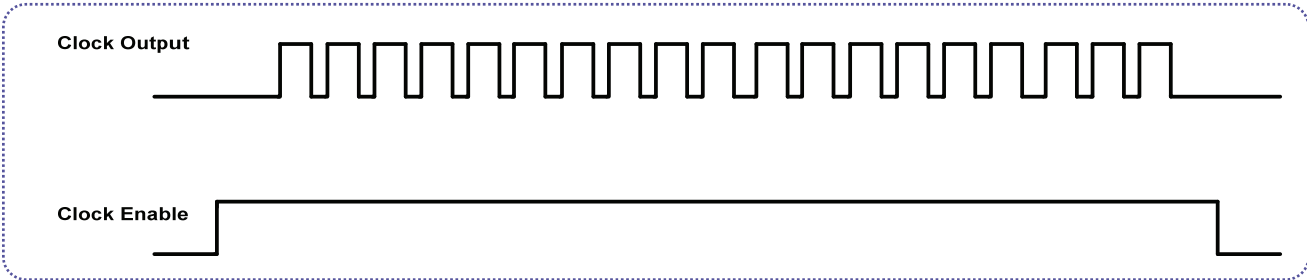
Specification	Output 1	Output 2	Output 3	Output 4	Output 5 & 6
Frequency	50 MHz	12.5 MHz	6.25 MHz	15.625 MHz	83.33 MHz
Stability	±50 PPM	±50 PPM	±50 PPM	±50 PPM	±50 PPM
Waveform	Square	Square	Square	Square	Square
Duty Cycle	50 %	50 %	50 %	50 %	50 %
Output Level	CMOS	CMOS	CMOS	CMOS	Differential PECL
Synchronization	N/A	Output 1	Output 1	None	None

**CUSTOMIZATION AVAILABLE**

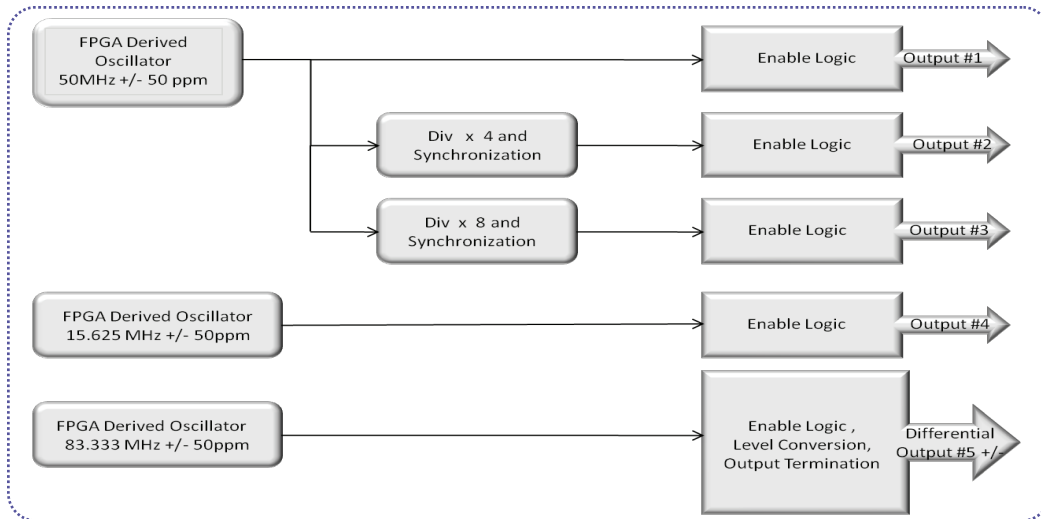
ProMetric is able to change connector styles and clock values for an additional charge.

**YOUR CHOICE FOR INTEGRATION SOLUTIONS**

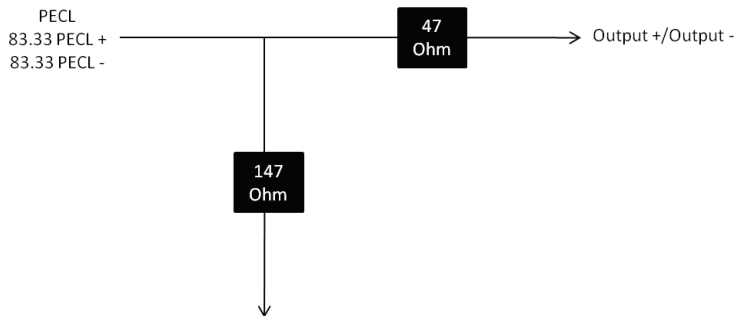
**OUTPUT TRIGGER TRUTH TABLE**



**FACTORY DEFAULT SYSTEM BLOCK DIAGRAM**



Each PECL Signal Line is terminated within the Clock Generator in the following manner.



**ORDERING INFORMATION**

- Price: \$10,140.00 USD
- Address Purchase Orders To:  
ProMetric Systems, Inc.  
6828 Washington Avenue South  
Eden Prairie, Minnesota 55344  
Phone: 952-224-7930  
Fax: 952-224-7934  
Email: sales@prometricsystems.com

**ABOUT PROMETRIC SYSTEMS**

ProMetric Systems is a systems integration firm that offers engineering, software development and production services across several industries. Whether it is designing a new test stand for your product, upgrading your control and data acquisition system, or deploying a custom enterprise-wide functional test system platform, ProMetric is your choice for integration solutions.

**YOUR CHOICE FOR INTEGRATION SOLUTIONS**